

# Azure AZ-900

## Describe Cloud Computing

- Define cloud models, including public, private, and hybrid
- Identify appropriate use cases for each cloud model
- Describe the consumption-based model
- Compare cloud pricing models

# Define Cloud Models

1

## Public Cloud

- Owned and operated by a third party
- Offers computing services including servers and storage
- Resources are securely shared between customers
- Accessed over the Internet

2

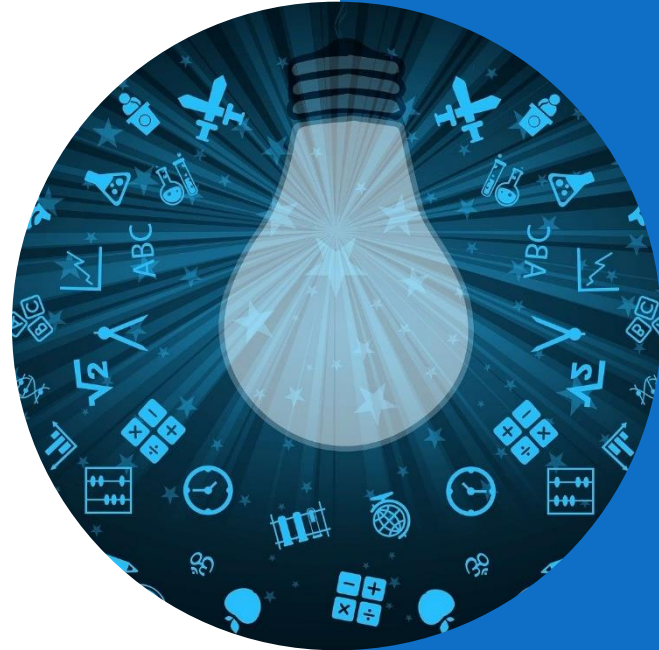
## Private Cloud

- Cloud dedicated to a single organization
- On-premises or hosting providers datacenter
- Services and infrastructure on a private network

3

## Hybrid Cloud

- Combination of public and private clouds
- Expands options and flexibility by moving between public and private environments



# Cloud Model Use Cases

1

## Public Cloud

- Businesses that don't want to manage data centers
- Organizations that require scalability and a globally distributed network
- Organizations that require details cost accounting for projects or departments

2

## Private Cloud

- Regulations prevent a move to the public cloud
- Physically isolated locations
- Large on-premises investment

3

## Hybrid Cloud

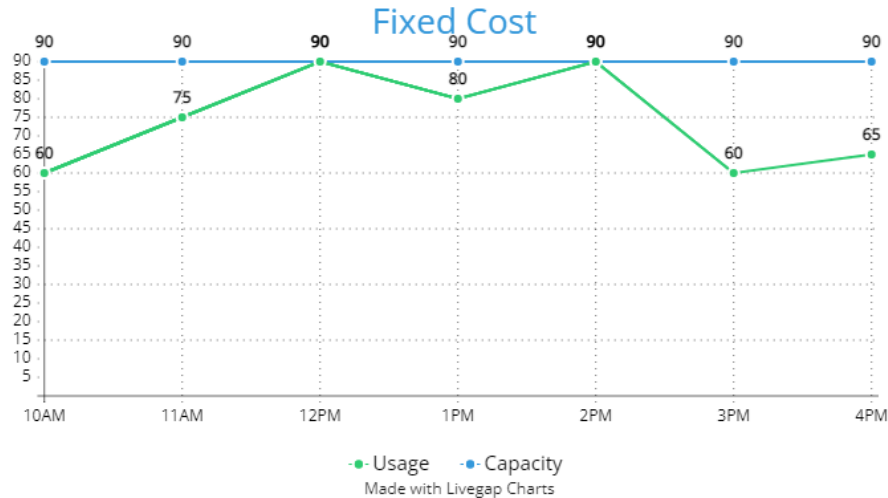
- Combination of public and private clouds
- Hybrid can be a transition or end-state
- Expands options and flexibility by moving between public and private environments



# Fixed Price

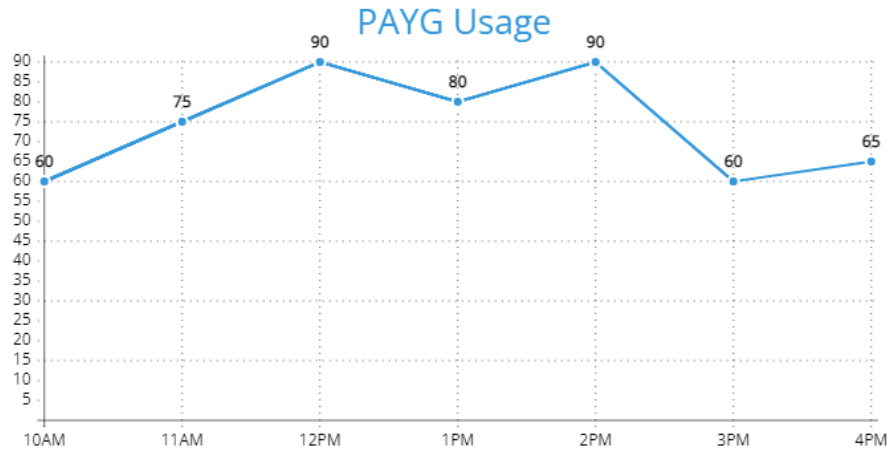
## Model

Fixed Price – Purchase and implement resources based on peak-demand



# Consumption-Based Model

Consumption-based – Only charged for the resources used on a pay-as-you-go (PAYG) rate



Made with Livegap Charts





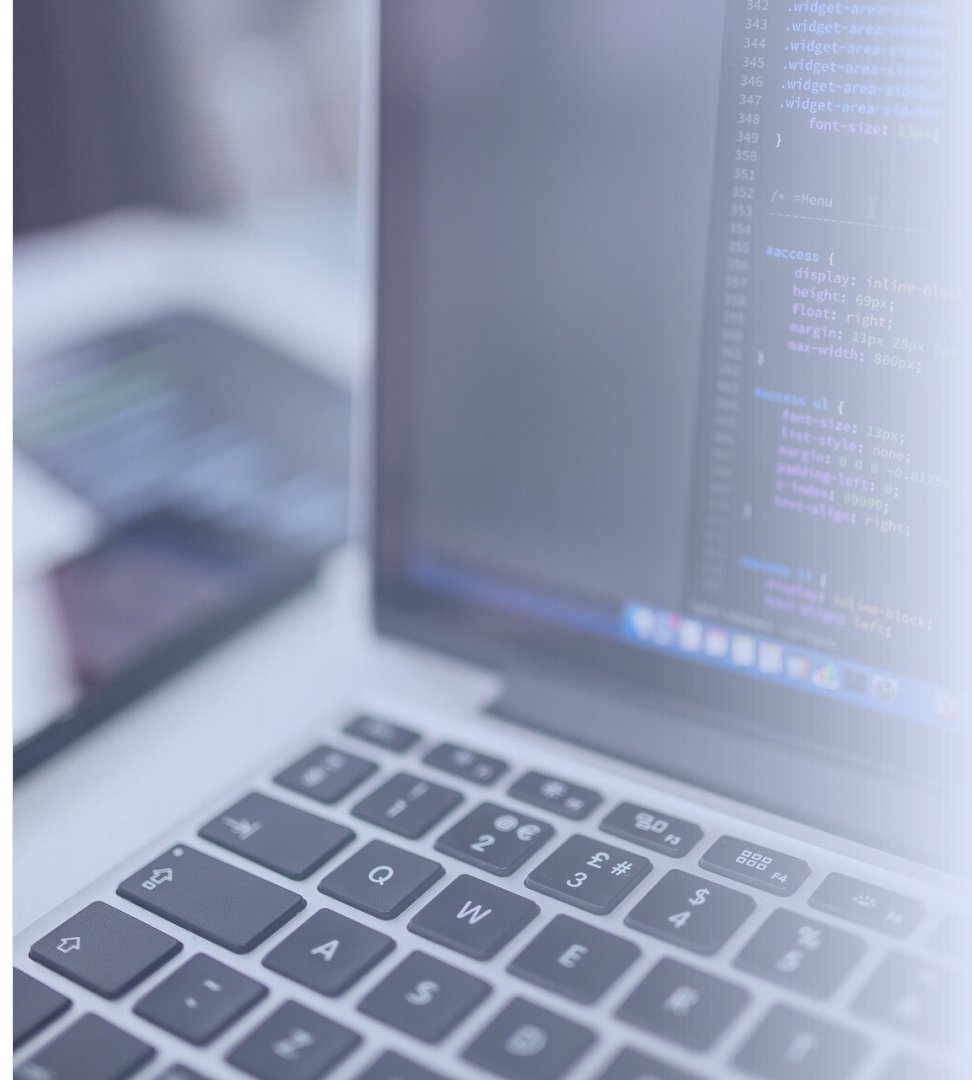
# CapEx vs. OpEx

## Capital Expenditure (CapEx)

- Assets are purchased up-front
- The value of the asset depreciate over time

## Operational Expenditure (OpEx)

- Billed when resources are used, no up-front costs
- Allocate costs to a project or department



# Consumption-Based Model

- No up-front CapEx costs
- No need to purchase, deploy and manage costly infrastructure
- Add and remove resources as needed
- Only pay for what is used

