

Azure AZ-900

Describe Cloud Concepts

- Define cloud computing
- Describe the shared responsibility model

What is

Cloud Computing?

The delivery of computing services—including servers, storage, databases, networking, software, analytics, and intelligence—over the Internet, “the cloud” to offer faster innovation, flexible resources, and economies of scale. You typically pay only for cloud services you use, helping you lower your operating costs, run your infrastructure more efficiently, and scale as your business needs change.



DIY Food

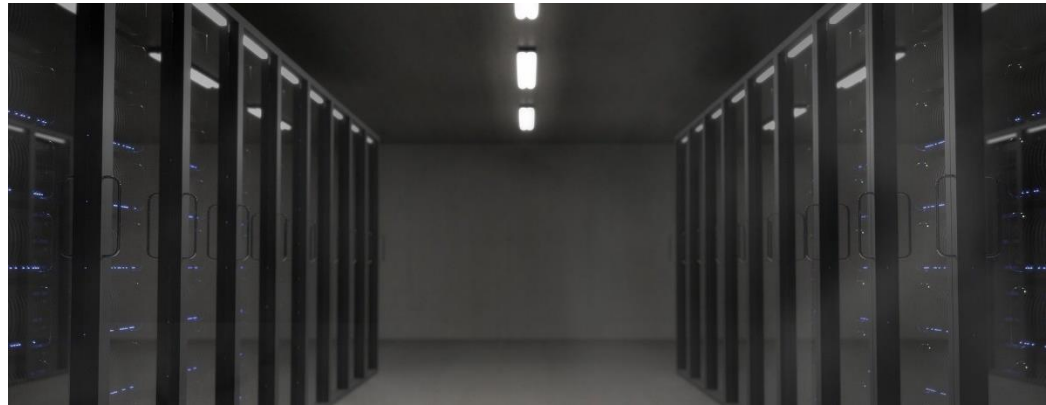
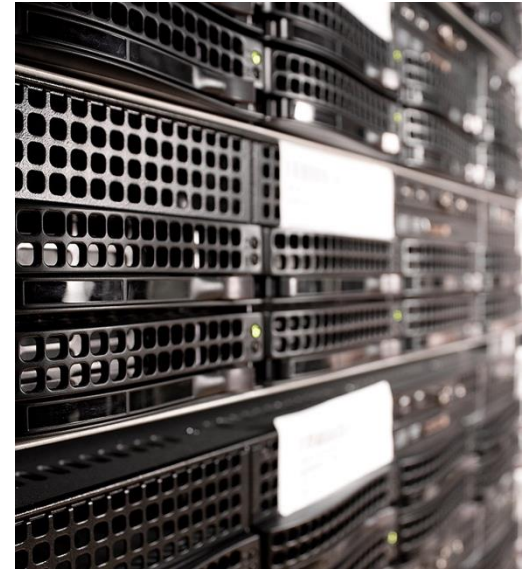
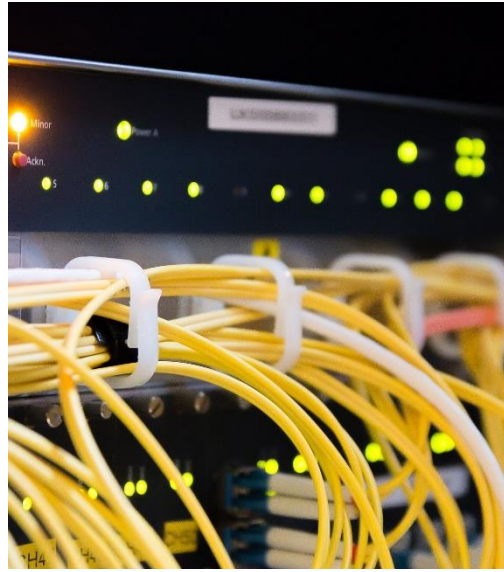


DIY

Infrastructure

Responsible for:

- Servers
- Network
- Internet access
- Storage
- Contracts
- Maintenance
- Security
- Etc.



What is

Cloud Computing?

-
- Reduce management overhead, allowing staff to focus on tasks that add value to the organization
 - Cost savings compared to on-premises computing
 - Premises – location such as housing or building
 - Premise – statement, idea, or assumption
 - *On-prem if you're not sure



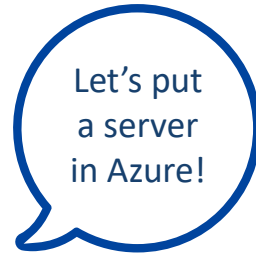
What is

Cloud Computing?

-
- Reduce management overhead, allowing staff to focus on tasks that add value to the organization
 - Cost savings compared to on-premises computing
 - Globally scalable solutions
 - Increased performance and reliability
 - Increased security
 - *Microsoft cloud has over 90 compliance certifications



Shared Responsibility Model



Shared Responsibility Model



Who backs up and
patches servers in the
cloud?

Shared Responsibility Model



The shared responsibility model defines the division of responsibility between the cloud provider and the customer for a given type of cloud service

Shared Responsibility Model



On-premises:
Customer is responsible for
the environment

Cloud:
There is a division of
responsibilities for managing
the environment

Shared Responsibility Model



Servers in Azure
Microsoft:

- Physical hardware
- Hypervisor
- Power
- Cooling

Customer:

- Server backups
- OS patching
- Applications

Shared Responsibility Model



Always the customers
responsibility:

- Data
- Endpoints
- Account
- Access management